

# Early Onset Dementia and Compassionate Allowance

ALZHEIMER'S  ASSOCIATION®

## About the Alzheimer's Association

### **Our mission:**

The Alzheimer's Association is the leading voluntary health organization in Alzheimer's care, support and research. Our mission is to eliminate Alzheimer's disease through the advancement of research; to provide and enhance care and support for all affected; and to reduce the risk of dementia through the promotion of brain health.

**Our vision is a world without Alzheimer's disease®.**

800.272.3900 | [alz.org](http://alz.org)®

alzheimer's  association®

# Early Onset Dementia

- Alzheimer disease is the most common form of dementia. It affects your memory, thinking, and behavior. It often progresses to the point where it affects daily activities and functions.
- Alzheimer disease most commonly affects older adults. But it can also affect people in their 30s or 40s. When Alzheimer disease happens in someone younger than age 65, it's known as early-onset (or younger-onset) Alzheimer disease.
- A very small number of people with Alzheimer disease have the early-onset form. Many of them are in their 40s and 50s when the disease takes hold.

# Diagnosing early-onset Alzheimer's

Health care providers generally don't look for Alzheimer's disease in younger people, getting an accurate diagnosis of early-onset Alzheimer's is a frustrating process. Symptoms may be incorrectly attributed to stress or there may be conflicting -or contributing diagnoses from different health care professionals. People living with early-onset Alzheimer's may be in any stage of dementia — early stage, middle stage or late stage. The disease affects each person differently and symptoms will vary.

# Early Onset Dementias May Include:

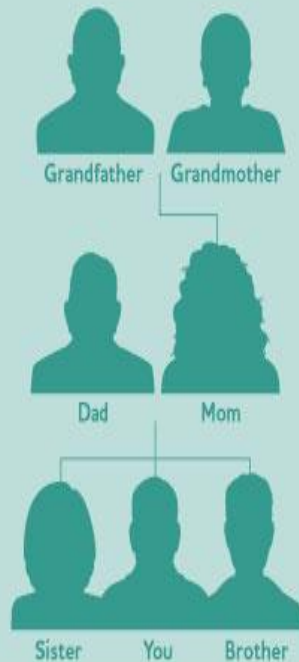
Primary dementias such as Alzheimer disease, frontotemporal and vascular dementias; genetic/familial dementias; metabolic disorders; and secondary dementias such as those that result from alcohol use disorder, traumatic brain injury, and infections.

Young-onset dementia The presentation is varied and may include cognitive, psychiatric and neurological symptoms.

You will To get the assessments needed, accurate diagnosis, and advocating for a thorough screenings are recommended, such as full history and access to neuroimaging, lumbar punctures, neuropsychology evaluations , and genetic testing.

# Is Alzheimer's Genetic?

- Family history is not necessary for an individual to develop Alzheimer's. However, research shows that those who have a parent or sibling living with Alzheimer's are more likely to develop the disease than those who do not have a first-degree relative with Alzheimer's. Those who have more than one first-degree relative with Alzheimer's are at an even higher risk. When diseases like Alzheimer's and other dementias tend to run in families, either genetics (inherited factors) or modifiable factors such as sleep, smoking habits, hypertension or diabetes can further increase risk.



Having a parent, brother or sister with Alzheimer's increases your risk but doesn't mean you will develop Alzheimer's.

# Support



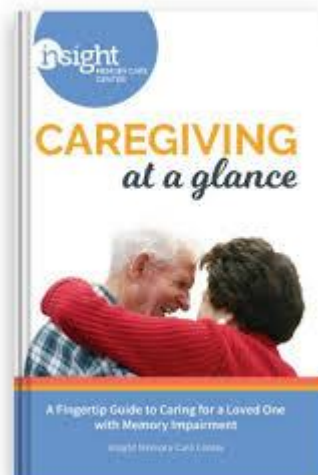
**40**  
insight

RESPIRE + FAMILY + INSIGHT

**insight**

insight has provided 40 years of respite care, family support, and resources to live well with dementia. Celebrate all we've done and all that's to come.  
Learn more at [insightmcc.org/40](https://insightmcc.org/40)

**Celebrate with Us!**  
**JULY 18, 2024**  
4:00 to 6:00 pm  
Insight Memory Care Center - Fairfax  
3903 Piedmont Drive, Suite 100, Fairfax, VA 22031







# Your Support Team

- Community Resources
- Family and Non-Family support
- Own your emotions, no guilt
- Get legal advice for future
- Medical team
- Spiritual, Nature
- What does the person want or need while processing

# Compassionate Allowance Program

The Social Security Administration (SSA) has added early onset (younger-onset) Alzheimer's to the list of conditions under its Compassionate Allowance program, giving those with the disease expedited access to Social Security Disability Insurance (SSDI) and Supplemental Security Income (SSI).



# Benefits For Early-Onset Alzheimer's Disease

There are 88 different conditions that qualify for expedited consideration under the Compassionate Allowances program. Applicants who have a disability that falls under the Compassionate Allowances guidelines can receive an approval for Social Security Disability benefits in just a few weeks, rather than having to wait months or even years before benefits can begin.

Early-onset Alzheimer's Disease is one of the disabling conditions that qualifies for processing under the SSA's Compassionate Allowances



# Other CAL Cognitive Diagnosis

- ALS/Parkinsonism Dementia Complex
- Creutzfeldt-Jakob Disease (CJD)
- Early-Onset Alzheimer's Disease
- Frontotemporal Dementia (FTD),
- Lewy Body Dementia
- Primary Progressive Aphasia
- Juvenile Onset Huntington Disease

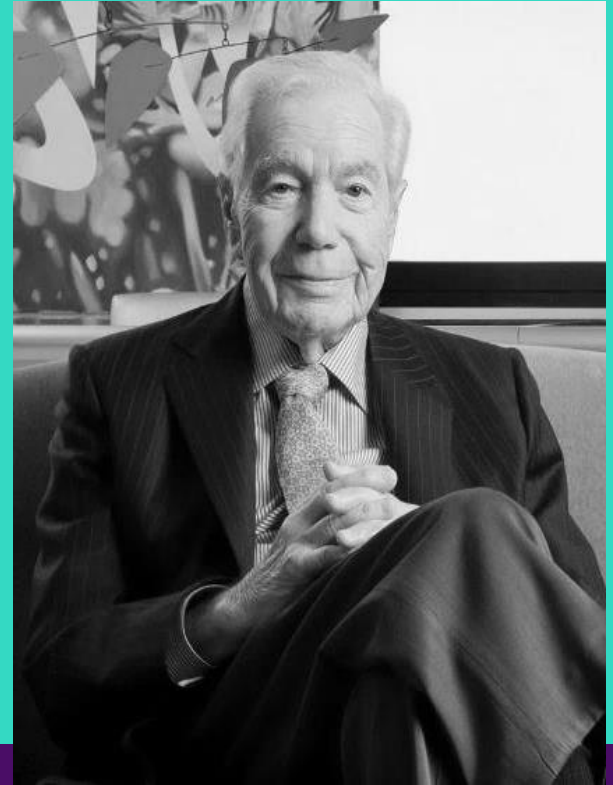
At least 200,000 individuals have been reported as having early-onset Alzheimer's. While the condition has been known to develop between the ages of thirty and forty, most commonly seen in individuals who are at least fifty years of age. Many cases of early-onset Alzheimer's Disease are linked to genetics. Those who develop the condition at a younger age often have a family history of early-onset Alzheimer's. The majority of early-onset Alzheimer's Disease is linked to three specific genes.

# Filing for Social Security Disability with Early-Onset Alzheimer's

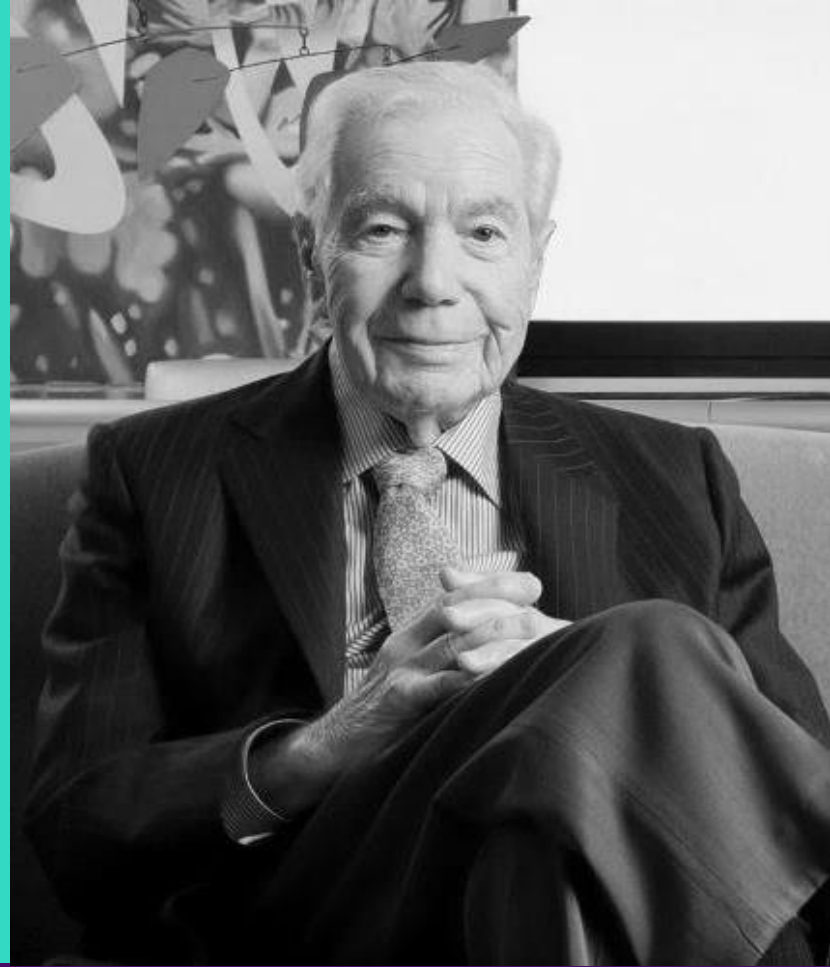
- When filing a claim for Social Security Disability due to a diagnosis of early-onset Alzheimer's Disease, you need:
- Include as much medical documentation as possible with your Disability claim.
- Medical records, documents, and written statements from your doctors supporting your diagnosis will be crucial to the success of your Social Security Disability claim.
- **DO NOT** assume that the applications for disability benefits will be automatically approved by the Social Security Administration.
- Unfortunately, this is not always the case. If you do not submit your application **properly, or fail to provide the Social Security Administration with the necessary medical evidence, your claim for benefits may be denied.**
- In order to reduce the chances of such an occurrence, you may wish to consider retaining the services of a qualified disability advocate or attorney.

# Organic Mental Disorders

- Organic Mental Disorders, also referred to as chronic Organic Brain Syndromes, are afflictions of the brain that can lead to severe mental or behavioral problems. They may be permanent or temporary, and can be either hereditary or caused by injury, disease, or a structural or systemic defect in body chemistry or hormones. Organic Mental Disorders do not include disorders that result from substance abuse, nor do they include psychiatric disorders.
- Common symptoms of Organic Mental Disorders include confusion, memory loss, loss of brain function, and agitation, but symptoms can differ somewhat based on the condition, and amnesia.



- “If you are disabled because of an Organic Mental Disorder so severe that it prevents employment, you may be entitled to Social Security Disability (SSDI) benefits. [How much the SSA will pay you](#) for your mental health disability will vary. This is why it is important to work closely with medical professionals and a qualified Social Security Disability attorney or advocate to collect and present the appropriate materials to support your [disability claim](#) to ensure that your Organic Mental Disorder disability case will have the highest possible chance of success.



## Filing for Social Security Disability with the Diagnosis of an Organic Mental Disorder

- The Social Security Administration (SSA) considers Organic Mental Disorders under Section 12.02 of the Blue Book, which covers [mental illness disabilities](#). A related listing, “Cerebral Trauma - [Traumatic Brain Injury](#),” is found in Section 11.18. The SSA defines Organic [Mental Disorders](#) as “psychological or behavioral abnormalities associated with a dysfunction of the brain” and requires that when you apply for disability benefits you submit records documenting the patient’s medical history, including examinations or laboratory tests which demonstrate the presence of a specific organic factor judged to be the cause of the person’s abnormal mental state and loss of mental function.



# Links and Support

- **Get Help With Your Compassionate Allowance Claim**

- To find out if you meet the SSA's requirements or to get help filling out and submitting your application for Social Security disability benefits you should talk to a disability attorney. Fill out the Free Case Evaluation above and you can be connected with an independent, participating Social Security disability attorney who subscribes to the website and can answer your questions.

- <https://www.disability-benefits-help.org/compassionate-allowances>

- <https://www.disability-benefits-help.org/disabling-conditions>

- <https://www.disability-benefits-help.org/glossary/social-security-blue-book/more-information>

- <https://www.disability-benefits-help.org/compassionate-allowances>

- <https://www.ssa.gov/compassionateallowances/conditions.htm>